



aras

2025 PARTNER

SYSTEM
INTEGRATOR

Our expertise with Aras Innovator

Demonstrated through case studies

**INNOVATIVE
AND
ADAPTIVE**



PLM
SOLUTIONS



SOFTWARE
CONSULTANCY



TRAINING
SERVICES

**FROM THE
DOMAIN
EXPERTS**

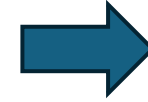
PLM service offerings

IMPLEMENTATION SERVICES

ADOPTING TO
TRANSFORMATION



LEGACY REPLACEMENT



ENABLEMENT SERVICES

Customization,
Configuration

Systems
Integrations

Upgrade &
Migration

Deployment &
Cloud

Tools, Techniques, Templates, and 17 years of sustained knowledge base in enabling PLM

Our Industry-wise presence with delivered solutions



Automotive



- Usability of System
- Performance of System
- Efficiency of System
- Productivity of Users of System

Aerospace



- Quality Document Management System
- PO Review using Collective
- Development Native App Workflow Approval

Shipping



- Digital Transformation for Standardization
- Developing Digital Twins
- Implementing Digital Thread
- Shipping & Equipment Certifications Process Optimization

Telecom



- Net Saving of \$1Million+
- 3 Legacy Systems Shut Down
- PLMI, PLME, Project Mgmt Enhancements

FMCG



- ARAS as "Safe Food Production System"
- Product & Supplier Traceability

Oil & Gas



- Administration & Maintenance of PDM
- User Training & Enhancements Deployment



Bringing PLM to the shipping industry to transform systems and users working in silos of legacy applications to build a connected digital thread with PLM at its core.

- ‘Request Management’ for New Construction, Classification of ships.
- Building Ship BOMs using Aras Variant Management.
- Survey, at Yard processes of New Construction ships.
- Stamping of documents using the Apryse tool.

Certificate management, developed by Flexur systems

- End-to-end certification process from application to final approval and invoicing.
- Issuance of product certificates, type approvals, and company recognition.

Dynamic Workflow Assignments

Challenges :

- ✗ Rigid workflows
- ✗ Changing roles & participants
- ✗ Manual reassignment

Solution:

- ✓ Dynamic workflow configuration for a number of steps, reviewers
- ✓ Role & rule-based routing
- ✓ Parallel & series reviewer steps additions during runtime

Adding a Reviewer in Dynamic Workflow

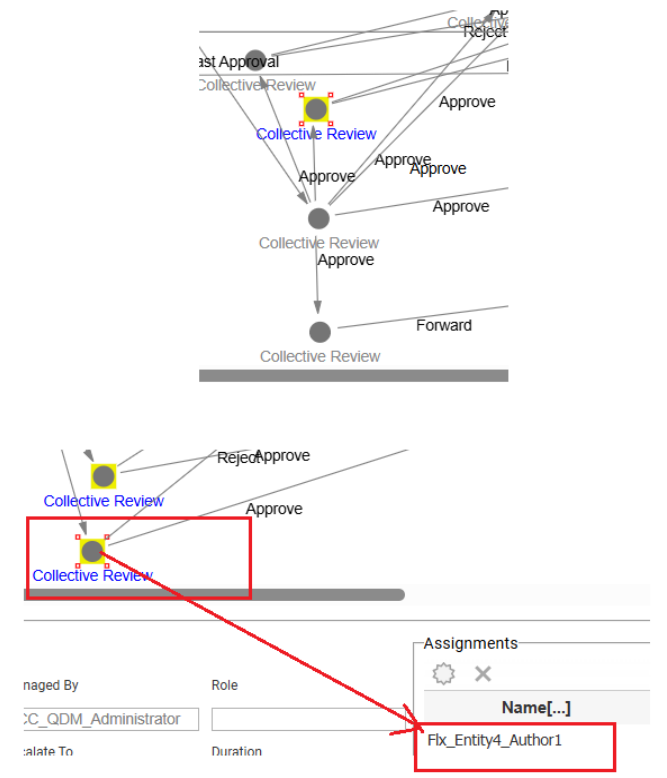
Before Add Reviewer

Role	Assignee [...]	Plant [...]	Can Reassign	Start Date [...]	Closed Date [...]	Disposit
Purchasing R...	Flx_Entity4_Author4	GRT	<input type="checkbox"/>	12/28/2025 9...		
AdHoc	Flx_Entity3_Author4	TLT	<input type="checkbox"/>	4/2/2026 11...		

Add Flx_Entity4_Author1

After Add Reviewer

Role	Assignee [...]	Plant [...]	Can Reassign	Start Date [...]	C
Purchasing R...	Flx_Entity4_Author4	GRT	<input type="checkbox"/>	12/28/2025 9...	
AdHoc	Flx_Entity3_Author4	TLT	<input type="checkbox"/>	4/2/2026 11...	
AdHoc	Flx_Entity4_Author1	GRT	<input type="checkbox"/>	4/8/2026 1:5...	



Dynamic Workflow Assignments



Attachment Document Assembly Revision History Related Documents Assignees Notification List Specific

PCC QD Assignees

Role	Assignee [..]	Plant [..]	Can Reassign	Start Date [..]	Closed Date [..]	Dispose
Purchasing R...	Flx_Entity4_Author4	GRT	<input type="checkbox"/>	12/28/2025 9...		
AdHoc	Flx_Entity3_Author3	TLT	<input type="checkbox"/>	4/2/2026 11...		
AdHoc	Flx_Entity4_Author1	GRT	<input type="checkbox"/>	4/8/2026 1:5...		

Before Change Reviewer

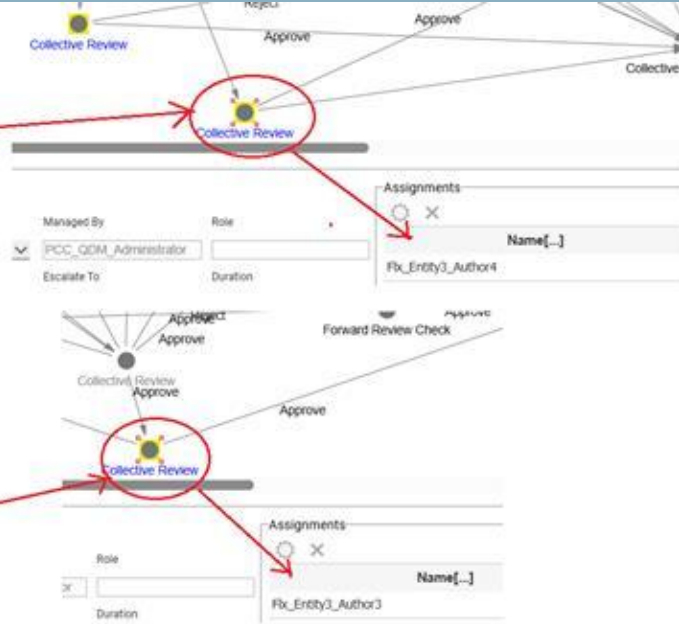
Change Flx_Entity3_Author4 to Flx_Entity3_Author3

Attachment Document Assembly Revision History Related Documents

PCC QD Assignees

Role	Assignee [..]	Plant [..]	Can Reassign
Purchasing R...	Flx_Entity4_Author4	GRT	<input type="checkbox"/>
AdHoc	Flx_Entity3_Author3	TLT	<input type="checkbox"/>
AdHoc	Flx_Entity4_Author1	GRT	<input type="checkbox"/>

After Change Reviewer



Changing an Existing Reviewer in Dynamic Workflow

Removing a Reviewer from Dynamic Workflow

Attachment Document Assembly Revision History Related Documents Assignees

PCC QD Assignees

Role	Assignee [..]	Plant [..]	Can Reassign	Start Date [..]
Purchasing R...	Flx_Entity4_Author4	GRT	<input type="checkbox"/>	12/28/2025 9...
AdHoc	Flx_Entity3_Author3	TLT	<input type="checkbox"/>	4/2/2026 11...
AdHoc	Flx_Entity4_Author1	GRT	<input type="checkbox"/>	4/8/2026 1:5...

Before Remove Reviewer

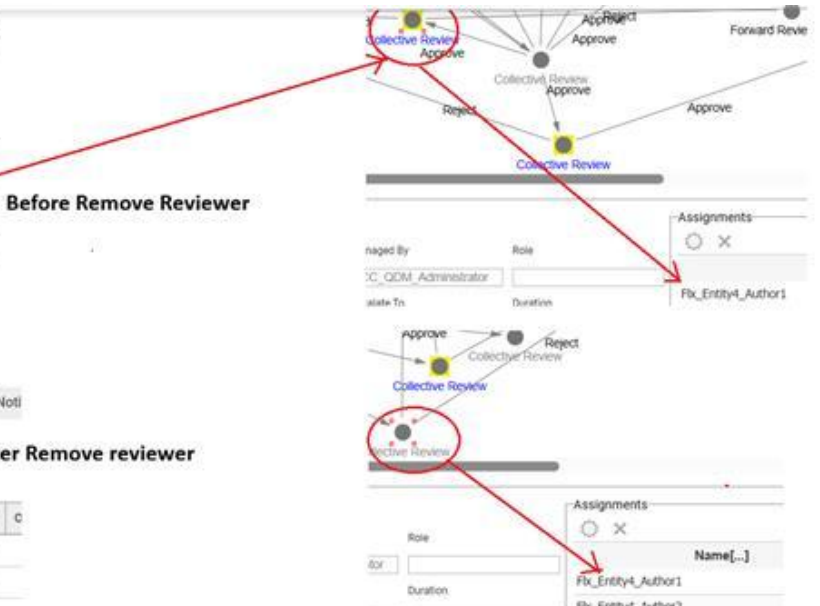
Remove Flx_Entity4_Author1

Attachment Document Assembly Revision History Related Documents Assignees Noti

PCC QD Assignees

Role	Assignee [..]	Plant [..]	Can Reassign	Start Date [..]
Purchasing R...	Flx_Entity4_Author4	GRT	<input type="checkbox"/>	12/28/2025 9...
AdHoc	Flx_Entity3_Author3	TLT	<input type="checkbox"/>	4/2/2026 11...

After Remove reviewer



Challenges :

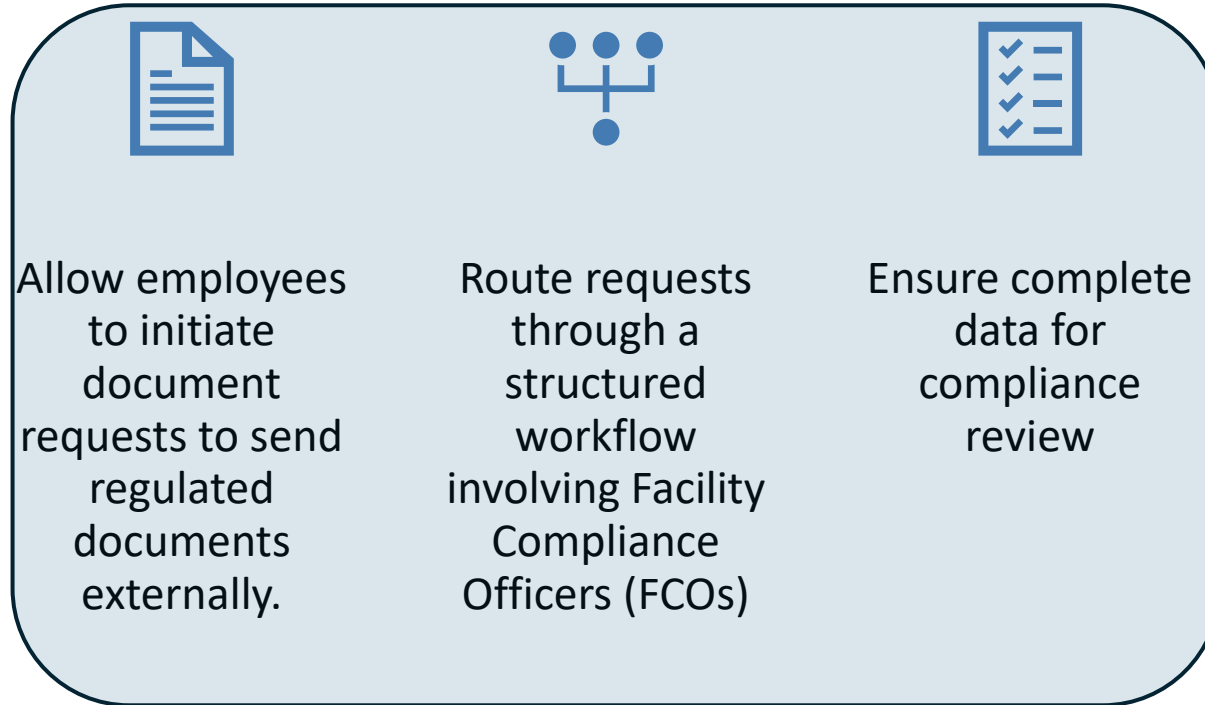
- ✗ Unsecure file sharing
- ✗ Unlimited time access
- ✗ Compliance risk

Solution :

- ✓ File Distribution
- Request workflow
- ✓ Portal-based access
- ✓ 2FA (otp) -protected

downloads

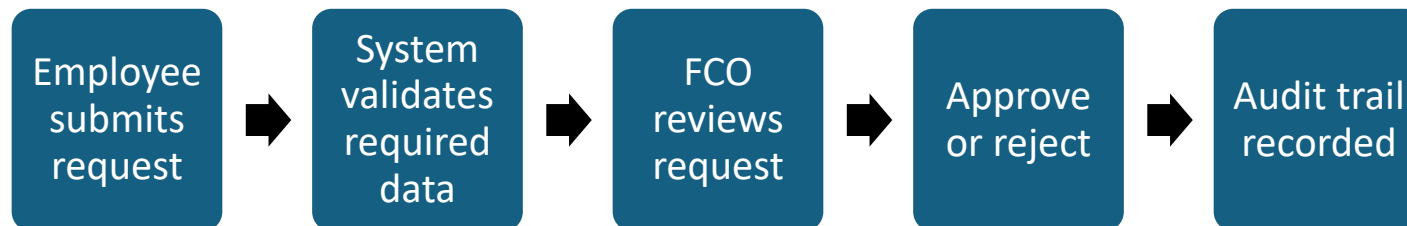
Purpose



Key Features



Workflow





Data Import via Excel – Operation data Upload

Challenges :

- ✗ PCP, PFD, pFMEA in Excel
- ✗ Offline updates
- ✗ Broken PLM linkage

Solution:

- ✓ Excel import & export
- ✓ Direct PLM synchronization
- ✓ Native to Aras Innovator

Process FMEA

Operation	Function	Failure Mode	Effect	Sev	Cause	Prevention	Detection	Risk	Action	Rsk	Role	Responsible	
1	Desc 215_1	op Fun1	FM 1	Effect 1	7	Cause 215_1	Prevention_1	detection 1	del1	My Action 13	DA	Rule 1	Piyush P.
2	Desc 215_1	op Fun2	FM 2	Effect 2	8	Cause 215_2		detection 2	del2	My Action 14	DA	Rule 1	Piyush P.
3	Desc 215_1	op Fun3	FM 3	Effect 3	7	Cause 215_3	Prevention 2	detection 3	7	My Action 14	DA	Rule 1	Piyush P.
4					7	New cause Effect 3		detection 3	3	My Action 22	DR	Rule 1	Piyush P.
5	Desc 215_1	op Fun4	FM 4	Effect 4	6	Cause 215_4	Prev Meas 3	detection 4	4	My Action 24	Rule 1	Rule 1	Piyush P.
6	Desc 215_1	op Fun5	FM5	Effect 5	4	Cause 215_5	Prev Meas 4	detection 5	del4 del5	My Action 24 Act 2_1_1	Rule 1 Rule 2	Rule 2 Rule 3	Piyush P.
7	Desc 215_1	op Fun6	FM 6	Effect 6	6	Cause 215_6	Prev Meas 3	detection 6	6	Act 2_2_1	Rule 3	Rule 3	Piyush P.
8	Desc 215_5	op Fun5	FM 5	Effect 5	5	Cause 215_5	Prev Meas 3	detection 7	del3 del4	Act 2_1_1 Act 2_2_1	Rule 3 Rule 3	Rule 3 Rule 4	Piyush P.
7					4	Cause 215_5		detection 5	del5	Act 2_3_1 Act 2_5_1	Rule 3 Rule 3	Rule 3 Rule 3	Piyush P.

Process Quality... x pFMEA.0000096 x

pFMEA.0000096

Process Control Plan

Operation			Characteristics				EM Technique			Control Method		
#	Description	Function	Processing Equipment	#	Spec.	Product	Process	Evaluation / Measure Technique	Sample Size	Sample Frequency	Control Method	Reaction Plan
1	Desc 215_1	op fun 1	PE1 PE1.1	1	*	Prod 215_1	P1	EMT 01	SS 9	SF 7	CM 01	Reaction P 0
1	Desc 215_1	op fun 1	PE1 PE1.1	1	*	Prod 215_1	P1	EMT 01	SS 9	SF 7	CM 01	Reaction P 0
1	Desc 215_1	op fun 1	PE1 PE1.1	1	*	Prod 215_1	P1	EMT 01	SS 9	SF 7	CM 01	Reaction P 0
1	Desc 215_1	op fun 1	PE1 PE1.1	1	*	Prod 215_1	P1	EMT 01	SS 9	SF 7	CM 01	Reaction P 0
2	Desc 215_2	op fun 2	PE2	2	*	Prod 215_2	Process with ET	EMT 02	SS 2	SF 6	CM 0	Reaction P 1
					*	Prod 215_2_1	New process	EMT 1	SS 1	SF 2	CM 1	Reaction P 2
2	Desc 215_2	op fun 2	PE2	2	*	Prod 215_2	Process with ET	EMT 02	SS 2	SF 6	CM 0	Reaction P 1
					*	Prod 215_2_1	New process	EMT 1	SS 1	SF 2	CM 1	Reaction P 2
2	Desc 215_2	op fun 2	PE2	2	*	Prod 215_2	Process with ET	EMT 02	SS 2	SF 6	CM 0	Reaction P 1

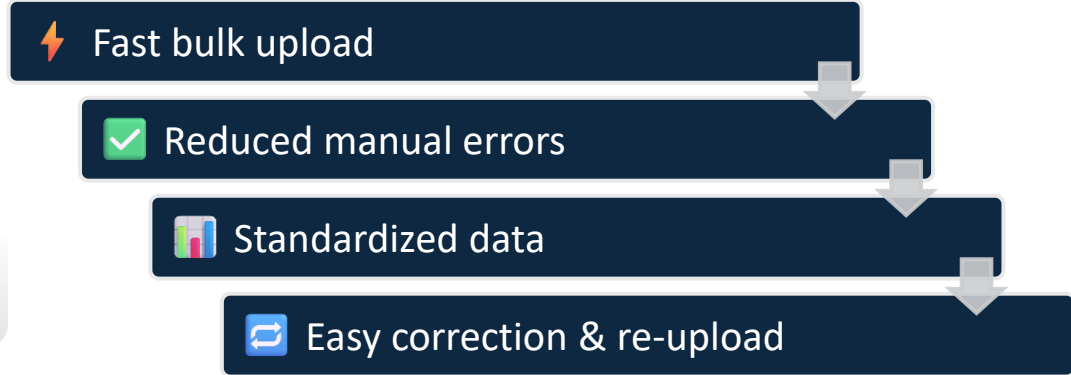
How It Works

Upload Operation Data via Excel



Operation			Characteristics				EM Technique			
#	Description	Function	Processing Equipment	#	Spec.	Product	Process	Evaluation / Measure Technique	Sample Size	Sample Frequency
1	Desc 215_1	op func 1	FM 1	Effect 1	7	Cause for Effect 1	7			
2	Desc 215_2	op func 2	FM 2	Effect 2	8	New cause item created	7			
3	Desc 215_3	op func 3	FM 3	Effect 3		Machining operator				

Benefits



Operation			Characteristics				EM Technique			
#	Description	Function	Processing Equipment	#	Spec.	Product	Process	Evaluation / Measure Technique	Sample Size	Sample Frequency
1	Desc 215_1	op func 1	PE1	1	*	Prod 215_1	P1			
2	Desc 215_2	op func 2	PE2	2	*	Prod 215_2	P2	EMT 1	SS 6	SF 1
3	Desc 215_3	op func 3	PE3	3	*	Prod 215_3	P3	EMT 2	SS 5	SF 2
4	Desc 215_4	op func 4	PE4	4	*	Prod 215_4	P4	EMT 3	SS 4	SF 3
5	Desc 215_5	op func 5	PE4.1	4.1	*	Prod 215_4_1	P4	EMT 5	SS 2	SF 5
6	Desc 215_6	op func 6	PE5	5	*	Prod 215_5	P5			
9	Desc 215_9	op func 9	PE6	6	*	Prod 215_6	P6			
10	Desc 215_10	op func 10	PE9	4.1	*	Prod 215_9	P9	EMT 9	SS 2	SF 9
11	Desc 215_11	op func 11	PE10	5	*	Prod 215_10	P10	EMT 10	SS 3	SF 10
12	Desc 215_12	op func 12	PE11	6	*	Prod 215_11	P11	EMT 11	SS 4	SF 11
13	Desc 215_13	op func 13	PE12	3	*	Prod 215_12	P12	EMT 12	SS 5	SF 12
14	Desc 215_14	op func 14	PE13	4	*	Prod 215_13	P13	EMT 13	SS 6	SF 13
16	Desc 215_15	op func 15	PE14	4.1	*	Prod 215_14	P14	EMT 14	SS 7	SF 14
17	Desc 215_16	op func 16	PE15	5	*	Prod 215_15	P15	EMT 15	SS 8	SF 15
		op func 17	PE16	3	*	Prod 215_16	P16	EMT 16	SS 9	SF 16

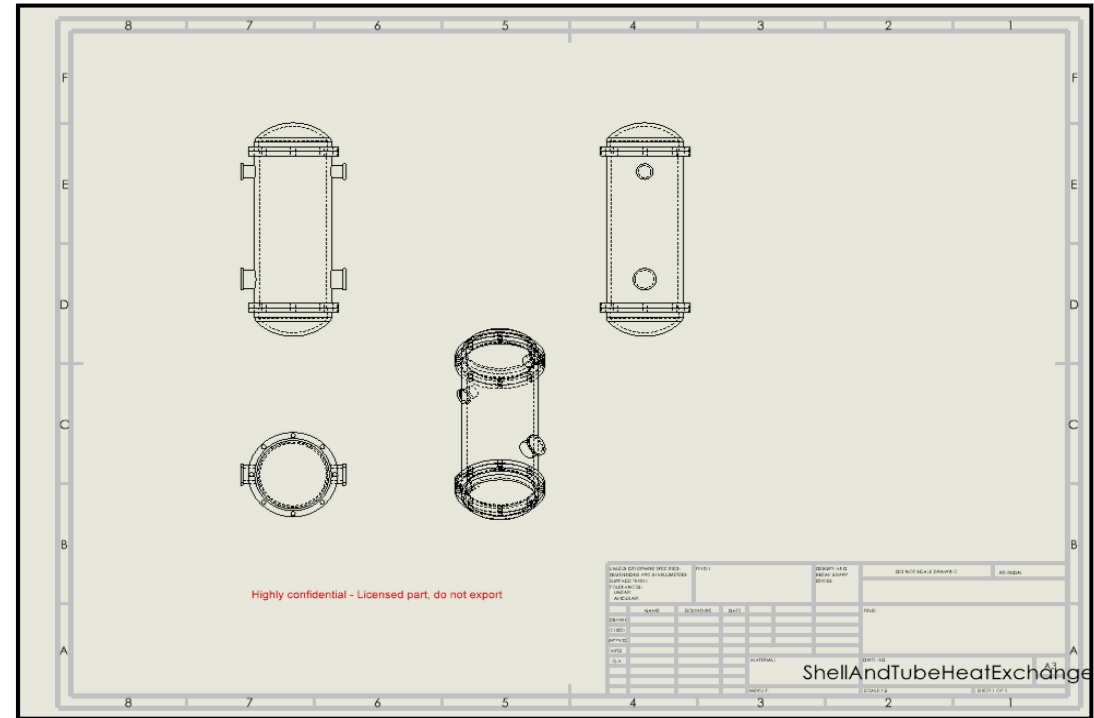
Document Merge & watermarking on CAD/CAM drawings .SLDDRW & .DWG



We engineered a .NET-based automation solution that uses Aras IOM, NXOpen, and SolidWorks APIs to enable the client to bulk-process CAD files and assemblies within Aras Innovator, applying compliance markings and annotations before seamlessly saving them back into the system.

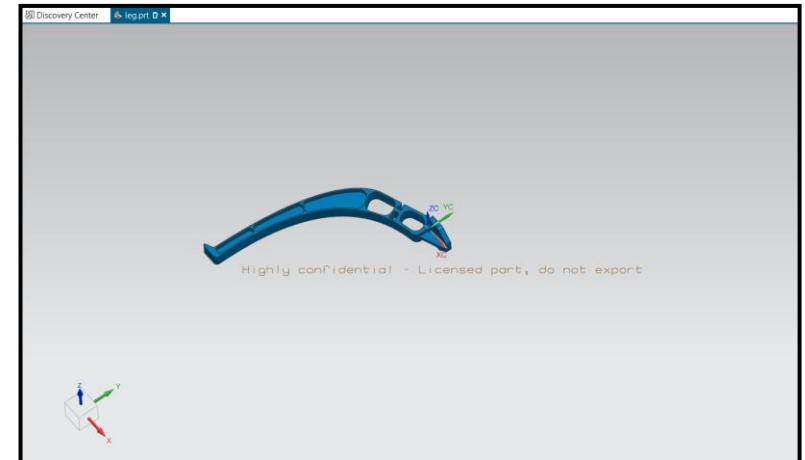
Challenges :

- ✗ Multiple formats
- ✗ Manual merging
- ✗ Repetitive compliance checks



Solution:

- ✓ Automated merge & stamping
- ✓ CAD + PLM documents
- ✓ Embedded in workflows



Integrated NC Programs



Resource	Name	ItemType
Machine		
1731	Munch	Tool
1802	Screw Driver	Tool
2301	Pier	Tool
3762	Hex Key	Tool
17234	Drilling Machine	Machine
D8123	Lathe	Machine

Challenges :

- ✗ Lack of integrated access to NC Programs during process planning

Solution:

- ✓ Incorporation of NC Program within Process Plan

Location: Detroit Language: English

Mount Assembly → P23124

5 : Operation 1

- 1731
- D8123

Creating Process Plan from MBOM view

MPP_TEST1

Location: []

Part Number	Name	Type	Qua...	Op...	Planned	Part Status	Reconcil...
ASSY1	ASSY1	Assembly	1				
COMP4	COMP4	Component	1	10	<input checked="" type="checkbox"/>		
PHANTOM	PHANTOM	Phantom	1	10	<input checked="" type="checkbox"/>		
COMP2	COMP2	Component	1	10	<input type="checkbox"/>		
COMP3	COMP3	Component	1	10	<input type="checkbox"/>		
COMP1	COMP1	Component	1	10	<input type="checkbox"/>		

Create Process Plan
View Item

Challenges :

✗ Users previously had to break their workflow by switching views just to initiate a Process Plan, causing unnecessary clicks and cognitive load.

Solution:

✓ Integrated the “Create Process Plan” action directly into the MBOM interface

Process Plans x MPP_TEST1 x

MPP_TEST1

Location: [] Language: English

ProcessPlan : MPP_TEST1 - ASSY1
Operation 10 : Op1

Part Number	Part Nar
COMP4	COMP4
PHANTOM	PHANTO
COMP1	COMP1

COMP1

Save Done Delete

Process Plan

Process Plan Number Revision State
COMP1

Name

Description

Produced Part Locations

Parts

Part Number	Revi...	Name	Type	Str
COMP1	A	COMP1	Component	Pre

Create Process Plan
View Item

Process Plans x MPP_TEST1 x

MPP_TEST1

Location: [] Language: English

MPP_TEST1 → ASSY1

- 10 : Op1
 - COMP4
 - PHANTOM
 - COMP1
 - COMP1 → COMP1
 - 10 : Op1

Result

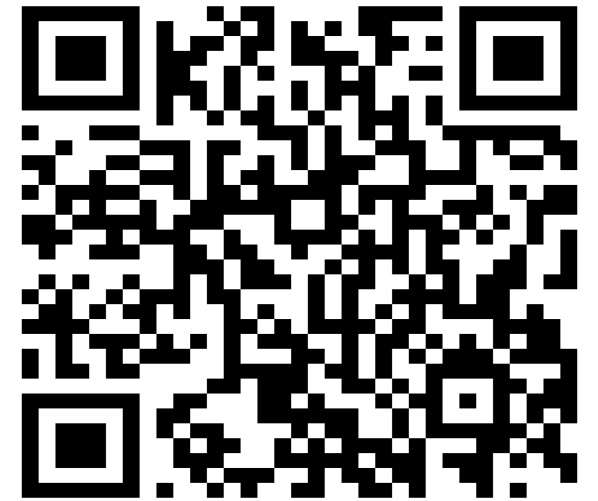
Contact Us



FLEXUR

aras
2025 PARTNER
SYSTEM
INTEGRATOR

Scan for case studies



CONTACT

Sanjay Talekar
+1 647 969 7909

INDIA

Chetan Chauhan
chetan.chauhan@flexur.com

UK

Graham McCall
info@flexur.com

USA

Sanjay Talekar
Sanjay.talekar@flexur.com